



Service Manual

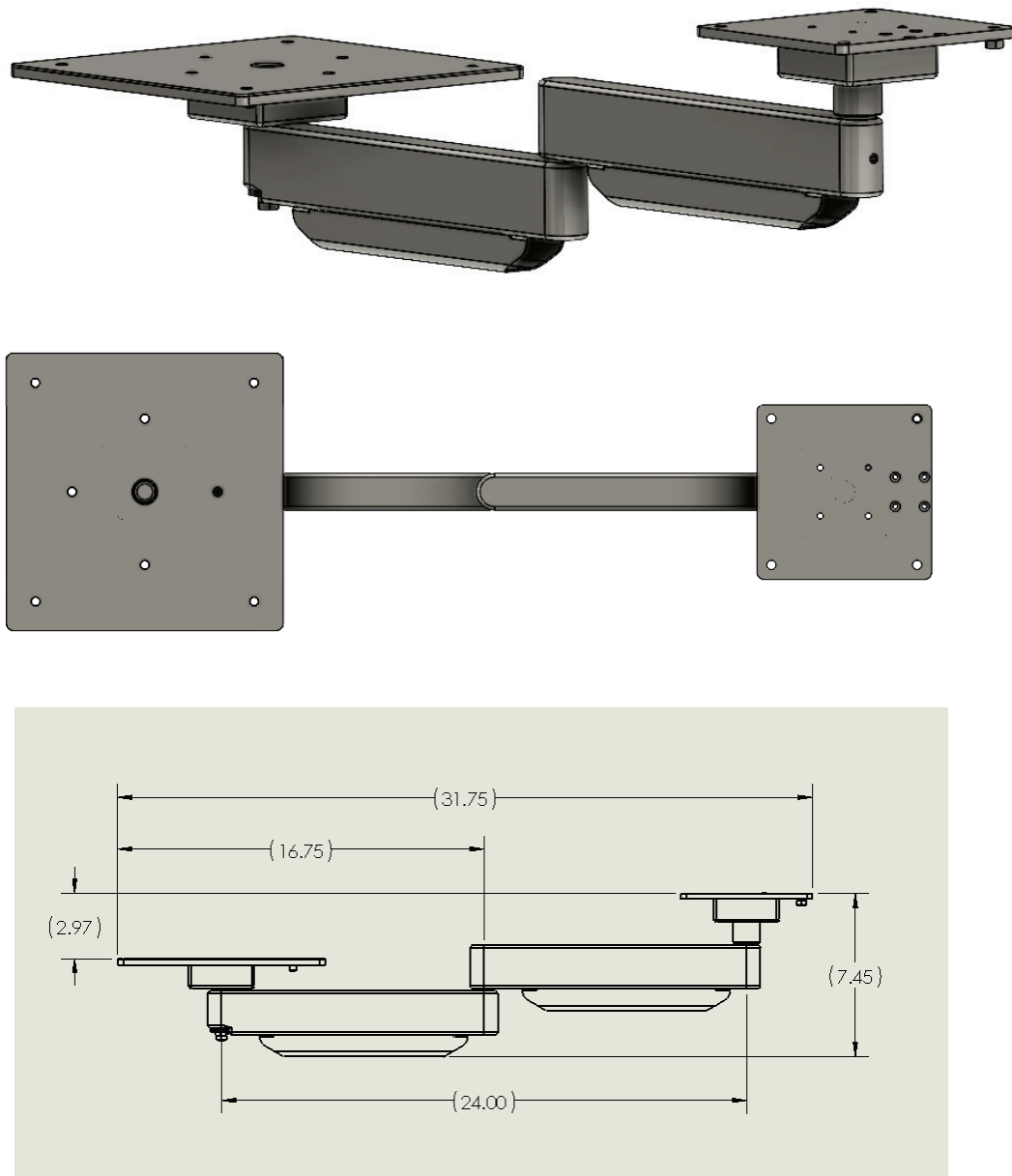
106-400

Under Cabinet Arm System

106-400 (Installation Fig. 1 & 2)

Installation

Figure 1. 106-400 Under Cabinet Arm (3 views)



106-400 (Installation Fig. 1 & 2)

Instructions for cabinet mounting

1. Begin by using the 106-407 Leveling Plate (Fig 2.) to mark the outer four drill hole locations and the inner four hole locations unless the cabinet is pre-drilled with inserts

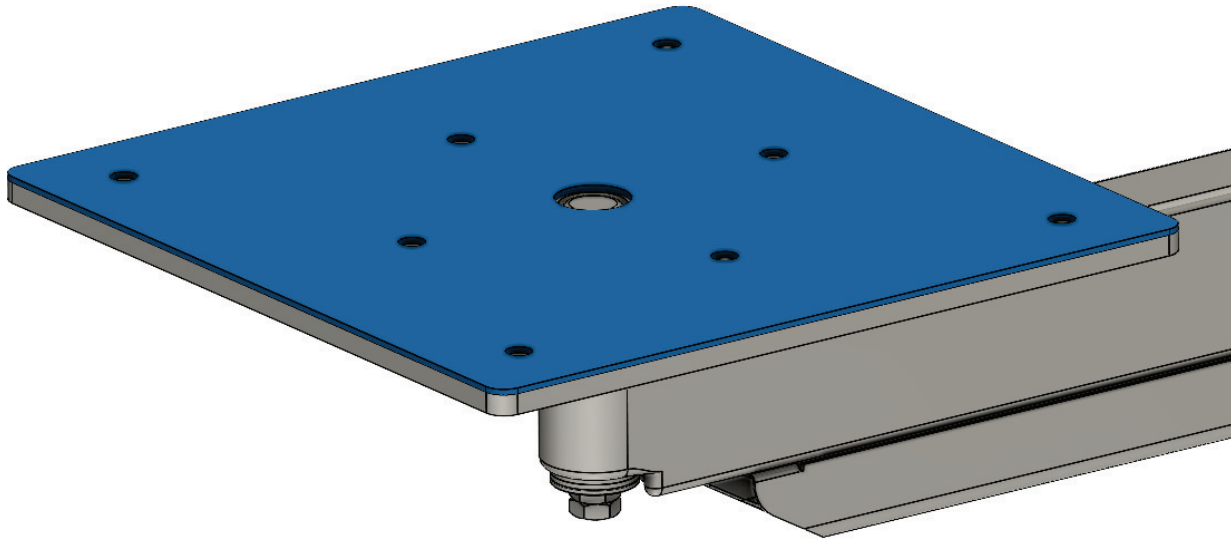


Figure 2. 106-407 Leveling Plate

2. Position the plate so that the edge is 2.5" from the edge of the cabinet
3. Use the outer four and inner four (8 total) clearance holes to secure the assembly to the underside of the cabinet

106-400 (w/ Starboard Surface, Standard)

Under Cabinet Arm System Installation Instructions (refer to Fig. 1 & 2)
Starboard Surface: Standard

Instructions for mounting starboard worksurface & RD unit to Arm Assembly

1. Align the ¼-20 threaded inserts in the 101-116 to the holes of the 106-408 plate

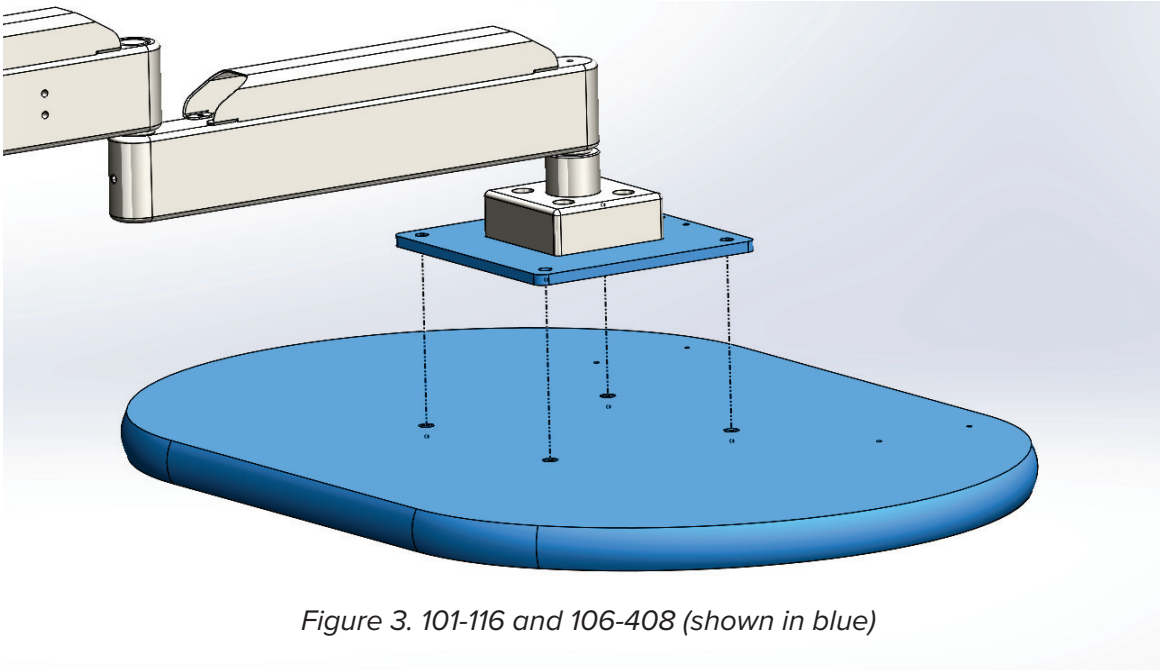


Figure 3. 101-116 and 106-408 (shown in blue)

2. Secure using the provided 001-105 ¼-20 x 5/8" Allen button head

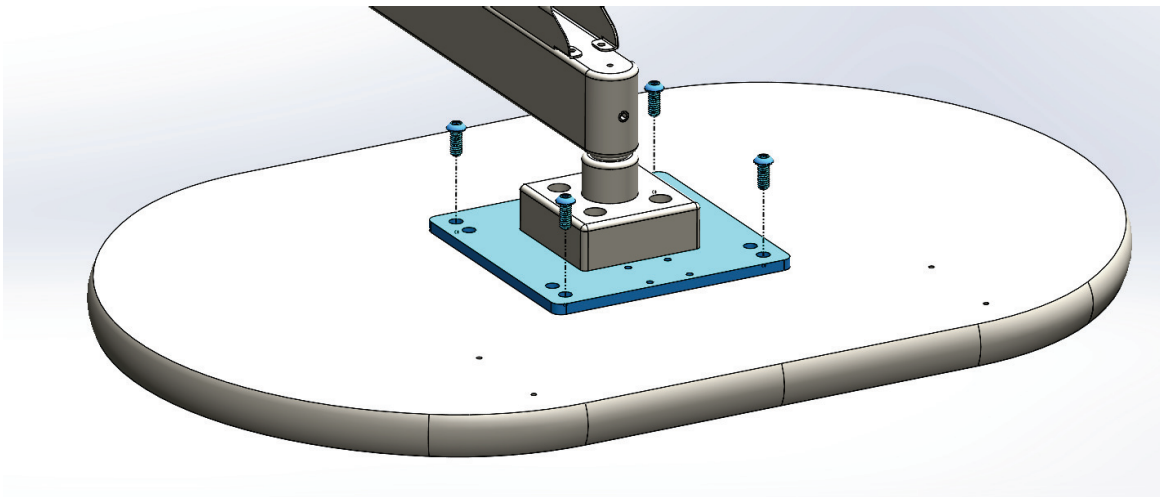


Figure 4. 001-105 screws inserted through 106-408 (shown in blue)

106-400 (w/ Starboard Surface, Standard)

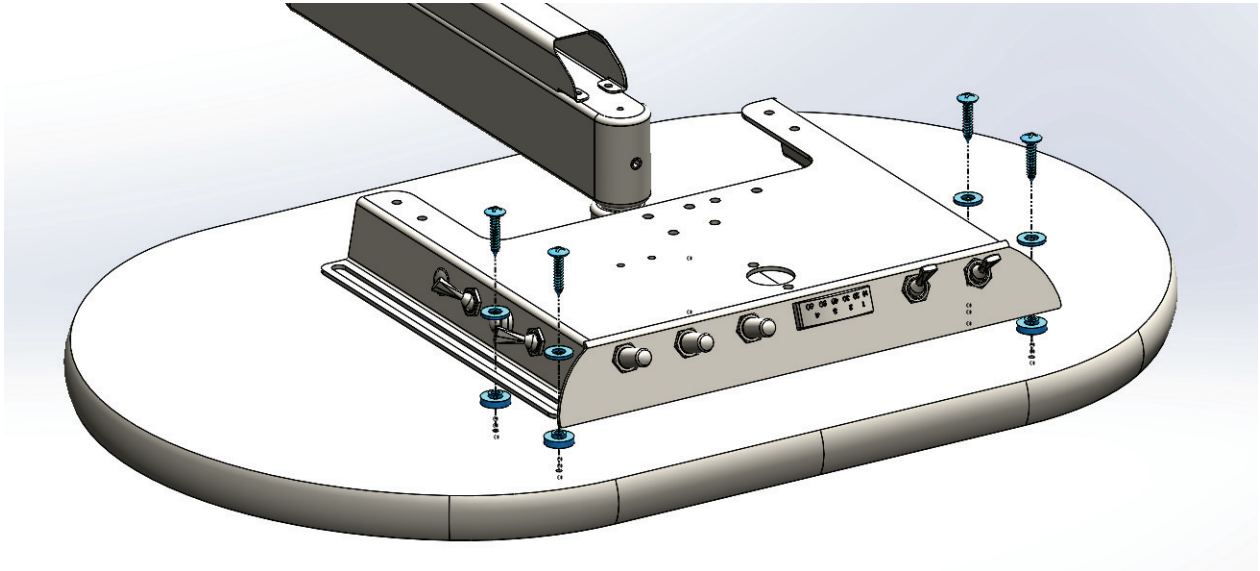


Figure 5. RD unit mounting, hardware (shown in blue)

3. To install the RD unit, align the chassis rails with the pre-drilled pilot holes. Secure using the #10 screws provided. NOTE: Step washer must rest in rail to provide proper movement for service access

106-400 (w/ Solid Surface, Custom)

Under Cabinet Arm System Installation Instructions (refer to Fig. 1 & 2)
Stone Surface: Custom

Instructions for mounting work surface mounting plate & RD unit to solid surfaces

1. Align 103-335 mounting plate center studs with the 106-408 arm system plate. (figure3) 103-335 mounting plate dimensions shown on page 9.

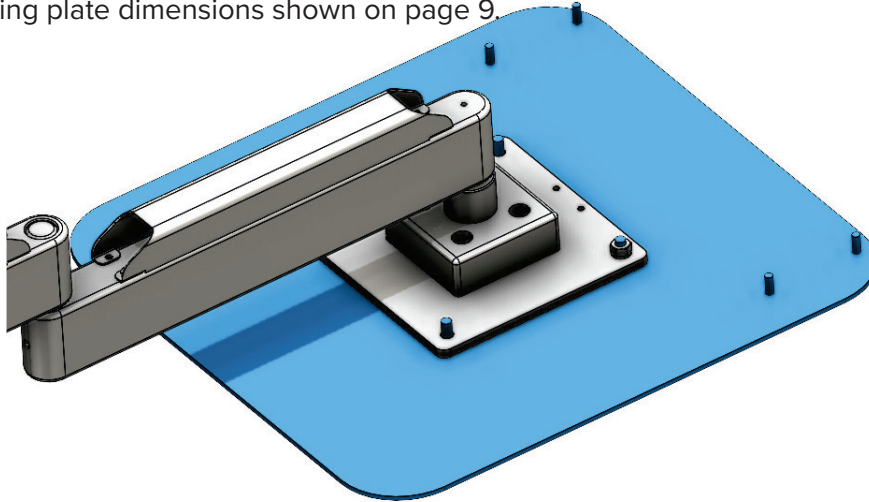


Figure 3. 103-335, step 1 (shown in blue) Sold Separately

NOTE: Orientate 106-408 hole pattern as shown (figure 4)

2. Orientate 106-408 hole pattern as shown (Fig. 4) Apply the 003-034 washers and tighten the 002-037 nuts over the studs coming through the holes of the 106-408 work surface mounting plate.

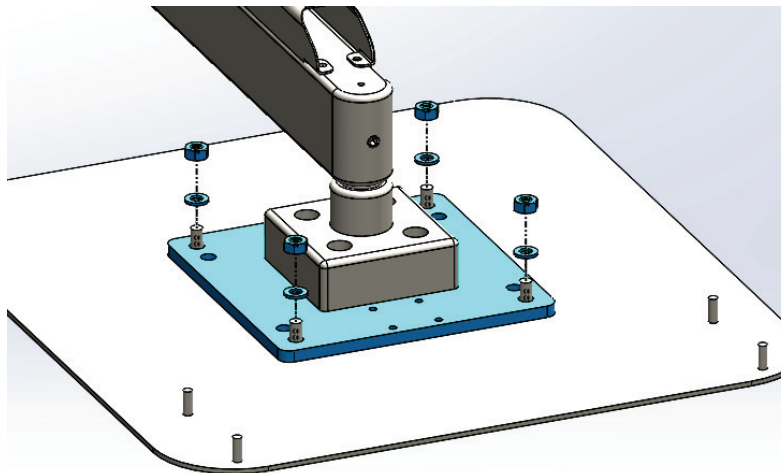


Figure 4. 106-408 work surface mounting plate and hardware, step 2

106-400 (w/ Solid Surface, Custom)

3. Inset the 103-334 step washer on the four studs
4. Place inverted unit on studs making sure step washers are properly sitting in unit rails
5. Apply washer and nut 003-034 and 002-032 to four places

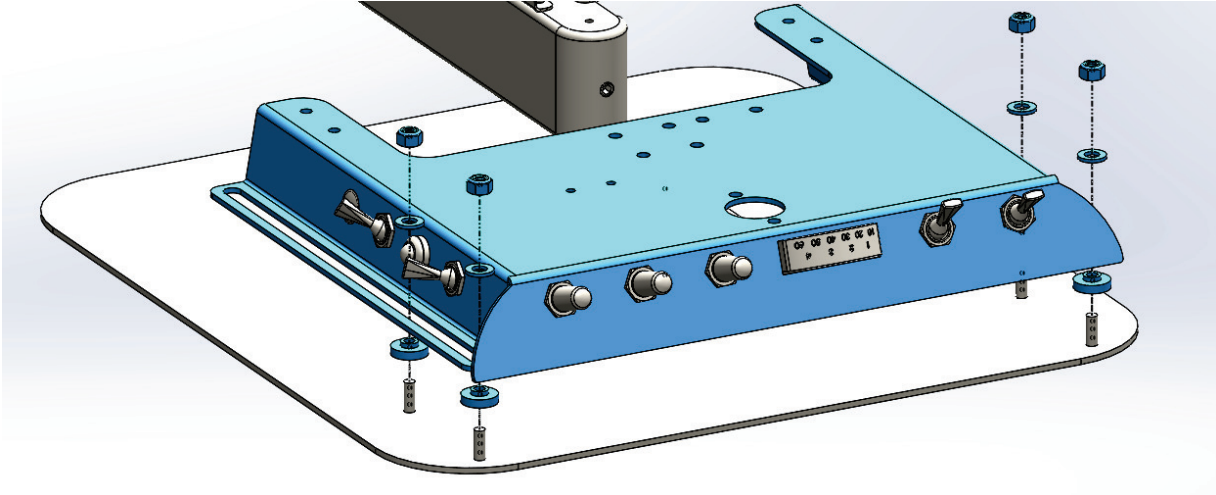


Figure 5. RD unit chassis with hardware, steps 3-5 (shown in blue)

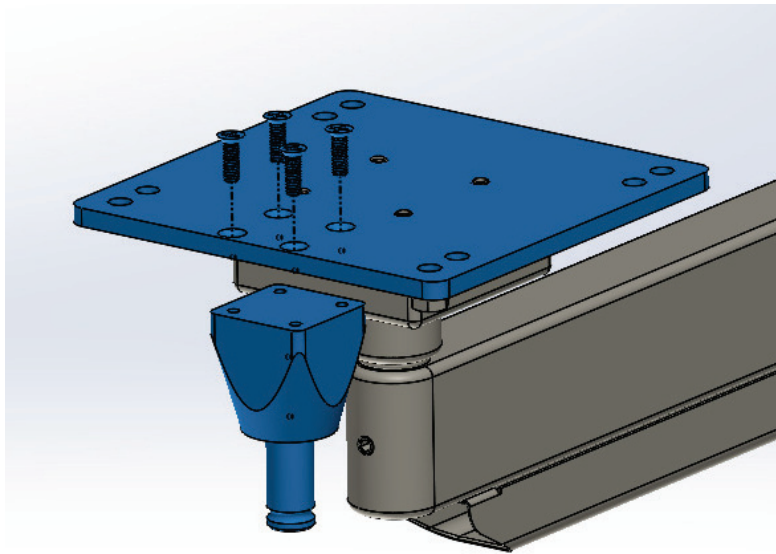
6. Adhere custom solid surface to 103-335 mounting plate.

106-400 (Assistant Only)

Under Cabinet Arm System Installation Instructions (refer to Fig. 1 & 2) Assistant Only

Instructions for mounting assistants assembly only (sold seperately)

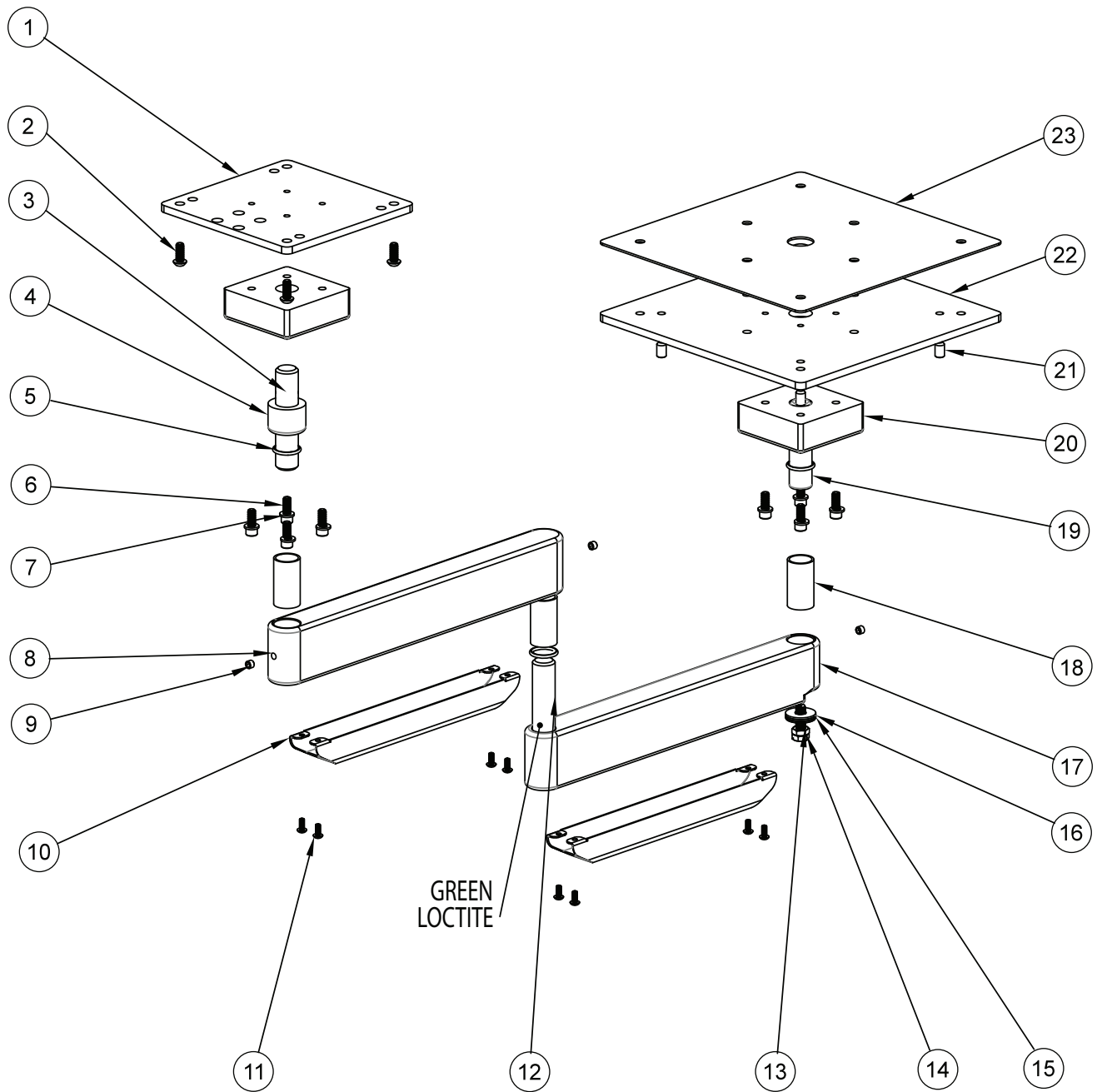
1. Orientate small mounting plate 106-408 with the four countersink facing forward (toward front, away from arm)
2. Install vacuum mounting block (105-486) using 10-32 5/8" length flat head fasteners.



3. Install or apply worksurface as illustrated in previous instructions

Final Adjustments

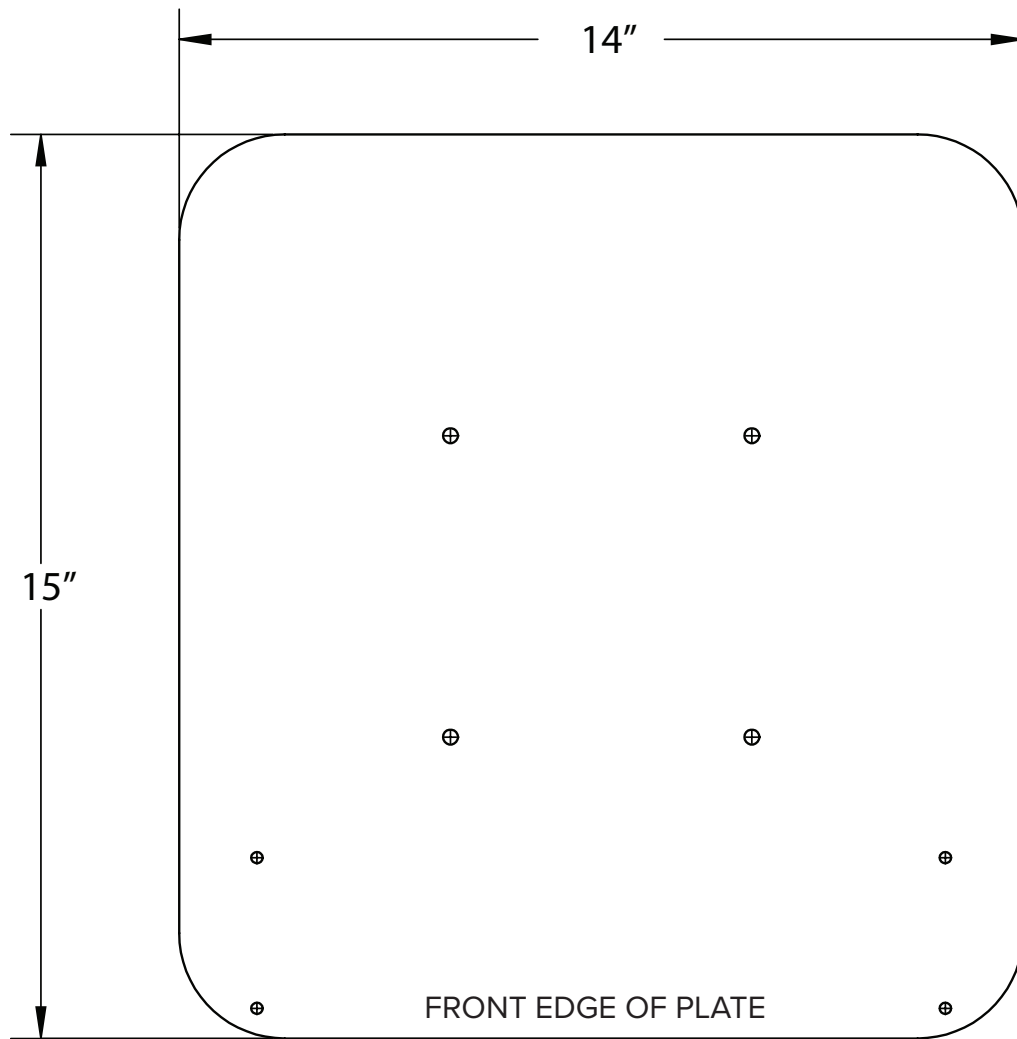
1. Leveling under counter mount
2. Pivot joint tensions



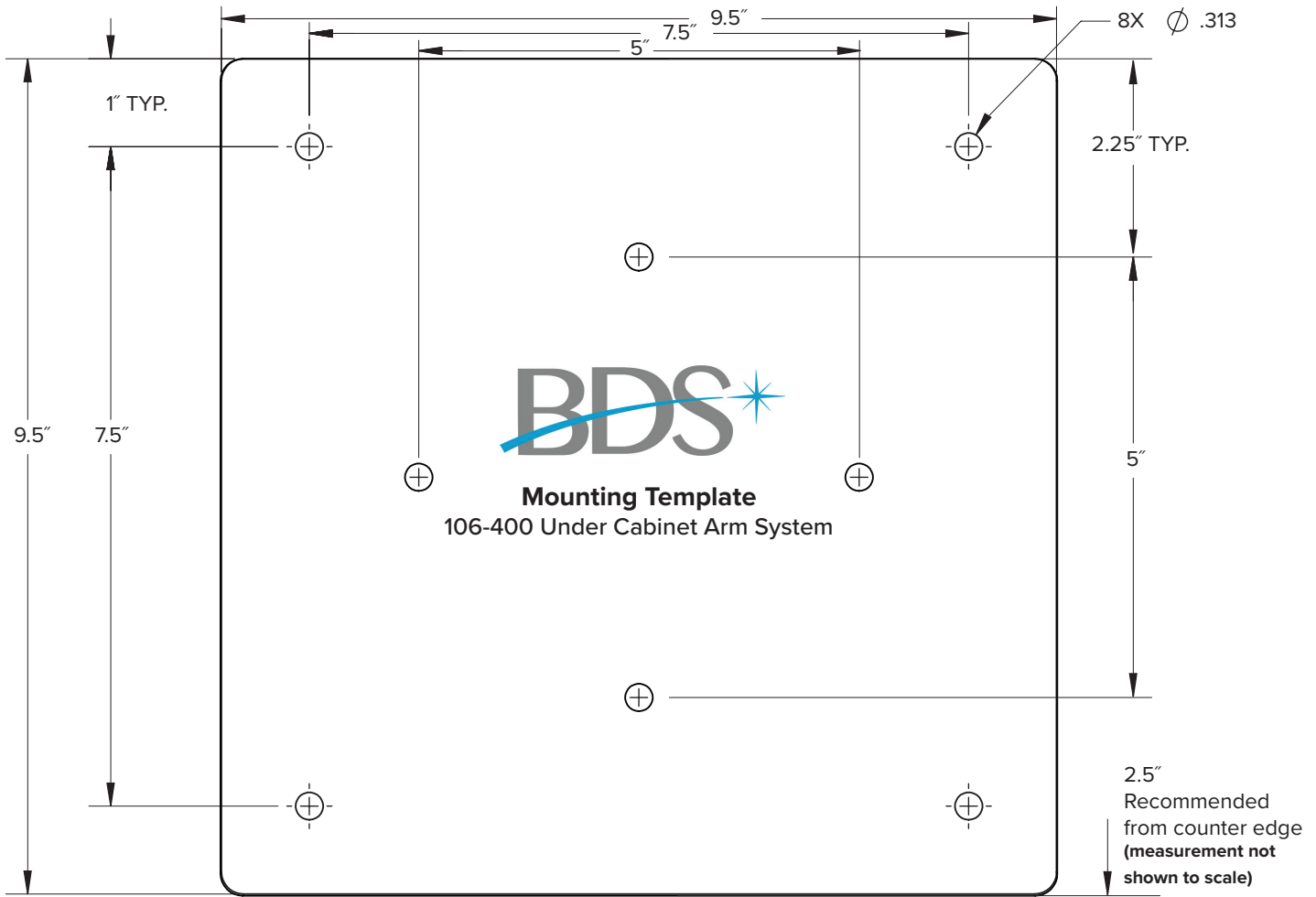
ITEM	PART DESCRIPTION	PART NUMBER	QTY	ITEM	PART DESCRIPTION	PART NUMBER	QTY	ITEM	PART DESCRIPTION	PART NUMBER	QTY
1	Work Surface Mounting Plate	106-408	1	11	Screw 8-32x 3/75"	001-161	8	21	Set Screw, 5/16-18x1/5"	005-056	4
2	18-8 Screw x 5/8"	001-105	4	12	Dowel Pin 3/4"x 3.5"	009-028	1	22	Mounting Plate	106-406	1
3	Dowel Pin 3/4"x 3-1/2"	009-028	1	13	Cup Point Set Screw, 5/16"-18	005-054	1	23	Mounting Adjustment Plate	106-407	1
4	Spacer	106-405	1	14	Hex Nut 5/16"-18	002-036	2				
5	Washer PTFE O-Ring #116 3/4"	003-069	3	15	Washer 1/4"	003-072	1				
6	Screw, 1/4-20 x 5/8	001-158	8	16	Washer #116 - 3/4"	003-010	2				
7	Lock Washer	003-034	8	17	Mount Arm	106-401	1				
8	Work Surface Arm	106-402	1	18	Bronze Bushing	013-016	3				
9	Set Screw, 1/4 -28 x 3/16"	005-011	3	19	Dowel Pin 3/4 x 3"	009-025	1				
10	Umbilical Cover	106-409	2	20	Undercabinet Arm Flange	106-403	2				

UNDER CABINET ARM SYSTEM
106-400

103-335 Mounting Plate



NOT TO SCALE



WARRANTY

BDS warrants its product to be free of defects in material and workmanship for SEVEN FULL YEARS from the date of purchase on all units. Auto-blocks and standard foot controls are covered by a LIFETIME warranty when factory installed as part of a complete dental system. Upholstery has a TWO YEAR warranty and does not cover normal wear, stains, cuts or tears. Our LED lights have a FIVE year Warranty and our halogen light has a ONE year Warranty. Operatory chair motors feature a TEN year warranty. All warranty is limited to repair or replacement by BDS. Products returned to the factory and determined to be defective will be repaired or replaced free of charge at discretion of BDS. The warranty does not cover light bulbs, electrical components and trimmed or installed tubing. BDS reserves the right to void all warranties if any product is installed by other than an authorized technician. BDS' warranty does not cover damage to any surface finish, including but not limited to, discoloration or abrasion from cleaners, disinfectants or light sources. No claim for labor or consequential damages will be allowed. Return items must include a copy of the invoice or packing slip as proof of purchase.

**Beaverstate Dental Inc.
115 S. Elliott Rd.
Newberg, OR 97132
800-237-2303
503-538-8756
503-538-2845 Fax
www.beaverstatedental.com**
