



Installation Manual

400-078

A-Dec Cascade Chair,
Helix Swing Mount Adapter Kit

ADAPTER INSTALLATION NOTES

BEFORE YOU BEGIN

- Open all containers and review the contents. It may be helpful to locate all kits containing components and accessories for installation.
- Locate all documentation supplied with the equipment. Manuals and installation information may be found in one of more boxes with their respective components. Set aside the documentation for the end user to review.

SPECIAL TEXT FORMATTING

To simplify installation, this manual is formatted to highlight references for necessary parts or tools:

- Parts that need to be located during assembly are shown in **bold**

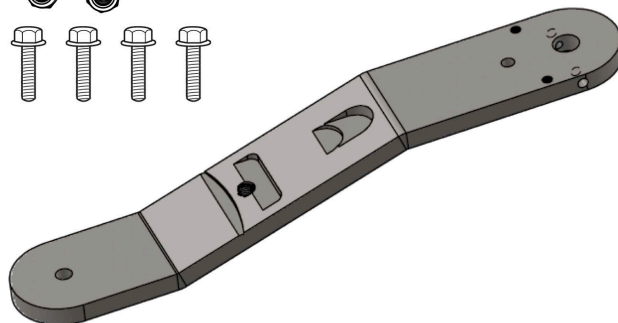
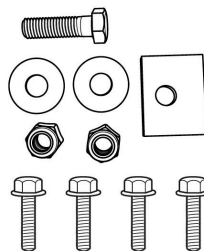
SUGGESTED TOOLS

- 7/16 combination wrench
- 9/16 combination wrench or deep wall socket
- 5/8 combination wrench
- 15/16 combination wrench
- SAE hex key set
- Magnetic Level, 6 to 12 inches long
- Flathead screwdriver, small
- Phillips screwdriver, small

400-078 A-DEC CASCADE, HELIX, SWING MOUNT ADAPTER KIT

Kit Includes:

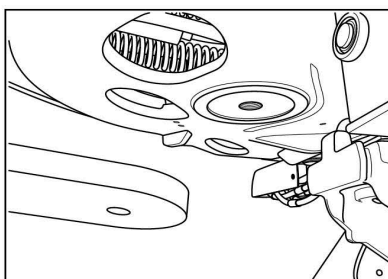
- Adapter Plate Qty. 1
- Tightener Plate Qty. 1
- 5/8-11 Nylock Nut Qty. 2
- 5/8 Flat Washer Qty. 2
- .625-11 x 2.25 Zinc Screw Qty. 1
- .625-11 x 1.75 Black Set Screw Qty. 1
- 3/8-16 x 1.25L Flanged Screws Qty. 4



To avoid injury, have an assistant hold up the seat assembly during adapter installation.

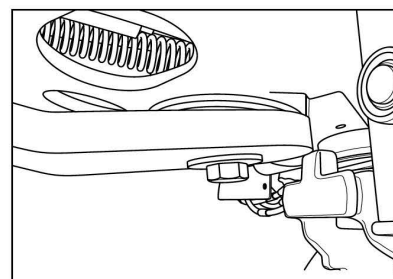
1. Recline the seat back, then lift the toe board and roller assembly.

Position the adapter plate underneath the chair seat structure



2. Attach the **Adapter Plate** to the bottom of the chair casting. Install **.625-11 x 2.25 screw** with **5/8 washer** through the adapter plate and up into the chair casting.

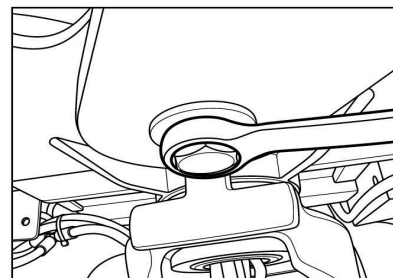
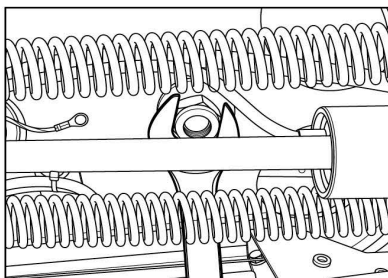
Screw and washer through adapter plate and chair casting.



Tighten with two 15/16" wrenches.

Tighten with two 15/16" wrenches.

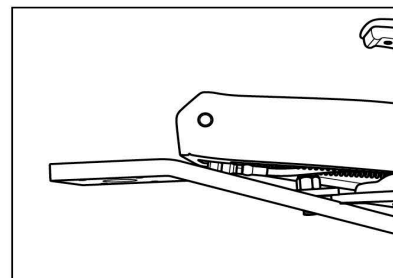
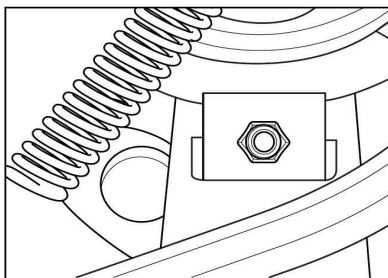
3. Install **5/8 washer and 5/8 nylock nut** onto screw in the center of seat structure. Tighten the screw and nut with two 15/16" wrenches.



Tightener Plate

Installation complete.

4. Install the **Tightener Plate** onto the threaded stud in adapter plate with the **5/8 nylock nut**. Center the adapter plate to the front of the chair casting then secure tightener plate using a 15/16" wrench.



WARRANTY

BDS warrants its product to be free of defects in material and workmanship for SEVEN FULL YEARS from the date of purchase on all units. Auto-blocks and standard foot controls are covered by a LIFETIME warranty when factory installed as part of a complete dental system. Upholstery has a TWO YEAR warranty and does not cover normal wear, stains, cuts or tears. Our LED lights have a FIVE year Warranty and our halogen light has a ONE year Warranty. Operatory chair motors feature a TEN year warranty. All warranty is limited to repair or replacement by BDS. Products returned to the factory and determined to be defective will be repaired or replaced free of charge at discretion of BDS. The warranty does not cover light bulbs, electrical components and trimmed or installed tubing. BDS reserves the right to void all warranties if any product is installed by other than an authorized technician. BDS' warranty does not cover damage to any surface finish, including but not limited to, discoloration or abrasion from cleaners, disinfectants or light sources. No claim for labor or consequential damages will be allowed. Return items must include a copy of the invoice or packing slip as proof of purchase.

**Beaverstate Dental Inc.
115 S. Elliott Rd.
Newberg, OR 97132
800-237-2303
503-538-8756
503-538-2845 Fax
www.beaverstatedental.com**
